

# Sanitary High-Temperature Diaphragm Pressure Transmitter

## Model: ZJX-PA-A2-S8-N1-L2



### PRODUCT FEATURES AND APPLICATION FIELDS

**Description:**

The measuring end of the ZJX-PA-A2-S8-N1-L2 sanitary high temperature diaphragm pressure transmitter diaphragm is made of 316L stainless steel, and the process connection adopts a chuck type sealing structure, solving problems such as scaling, blockage, cleanliness, and hygiene. At the same time, the heat dissipation fin method effectively solves the high temperature problem.

**Features:**

Suitable for SIP and CIP

Easy to disassemble and clean quickly

Suitable for various gases, liquids, viscous, powdery, and easily crystalline media

**Advantages:**

All stainless steel material effectively isolates the medium

Fully welded structure with good sealing performance

Effectively preventing the impact of high temperatures

Support OEM/ODM customization

**Application:**

Food and Beverage

Biopharmaceuticals

Brewing

Water treatment

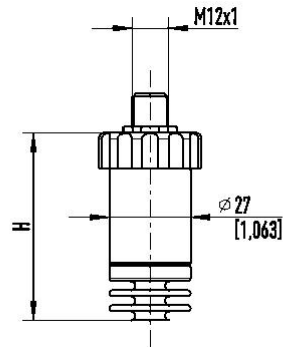
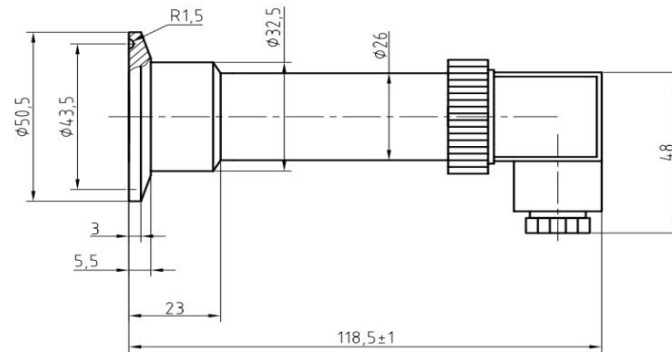
Medical treatment

Farmland irrigation

## PRODUCT PARAMETERS


Measuring Range	-1~0~100bar
Pressure Mode	Absolute pressure, gauge pressure, negative pressure
Output/Communication	4-20mA,0-5V,0.5-4.5V,0-10V,RS485
Accuracy	0.25%F.S, 0.5%F.S
Power Supply	10~30V DC
Process Connector	G1/4,G3/8,G1/2,G3/4,G1 inch,1/4"NPT,1/2"NPT,R1 inch,1.5 ",Customizable
Electric Connection	DIN43650 Hirschmann Connector, IP65; M12 4 Pins connector, IP67; Direct lead, IP68;
Working Temp	-20~80°C, -20~180°C (High Temperature Type) ;
Overload Pressure	150%FS
Contact Medium Material	304 stainless steel, 316L stainless steel, PTFE, PVDF, Hastelloy alloy, Customizable
Response Time	≤10ms

## OVERALL DIMENSIONS



## PRODUCT CONNECTION MODE

### Circular connector M12 x 1 (4-pin)

		2-wire	3-wire
	U <sub>B</sub>	1	1
	0V	3	3
	S+	-	4

## PRODUCT SELECTION TABLE

Code								
ZJX-PA-A2-S8 N1-L2	Flat Embedded Diaphragm Pressure Transmitter							
	Code	Pressure Mode						
	G	Gauge Pressure						
	A	Absolute Pressure						
		Code	Pressure Range					
		Fill In The Actual Demand	-1~0~100bar					
		Code	Output/Communication					
		O1	4-20mA					
		O2	0-10V					
		O3	0-5V					
		O4	RS485					
		O5	Customizable					
		Code	Process Connection					
		S1	G1/4					
		S2	G3/8					
		S3	G1/2					
		S4	G3/4					
		S5	G1 inch					
		S6	1/4"NPT					
		S7	1/2"NPT					
		S8	1.5"					
		S9	Customizable					
		Code	Accuracy					
		C1	0.25%F.S					
		C2	0.5%F.S					
		C3	Customizable					
		Code	Shell Material					
		T1	304 stainless steel					
		T2	316 stainless steel					
		T3	PTFE					
		T4	PVDF					
		T5	Hastelloy alloy					
		T6	Customizable					
		Code	Electrical Connection/Waterproofing Level					
		H	DIN43650 Hirschmann Connector, IP65					
		M	M12 4 Pins Connector, IP67					
		L	Direct lead, IP68					
ZJX-PA-A2-S8 N1-L2	G	0-20bar	O1	S8	C1	T1	M	Model No.Example


**ZIJUXING**

HUNAN ZIJUXING TECHNOLOGY CO., LTD.

Tel: +86-731-85473669

Fax: +86-731-85473669

E-mail: postmaster@zjxsensor.com web: www.zjxsensor.com

 Address: No. 319, Linyu Road, High tech Development Zone,  
Changsha City, Hunan Province, China